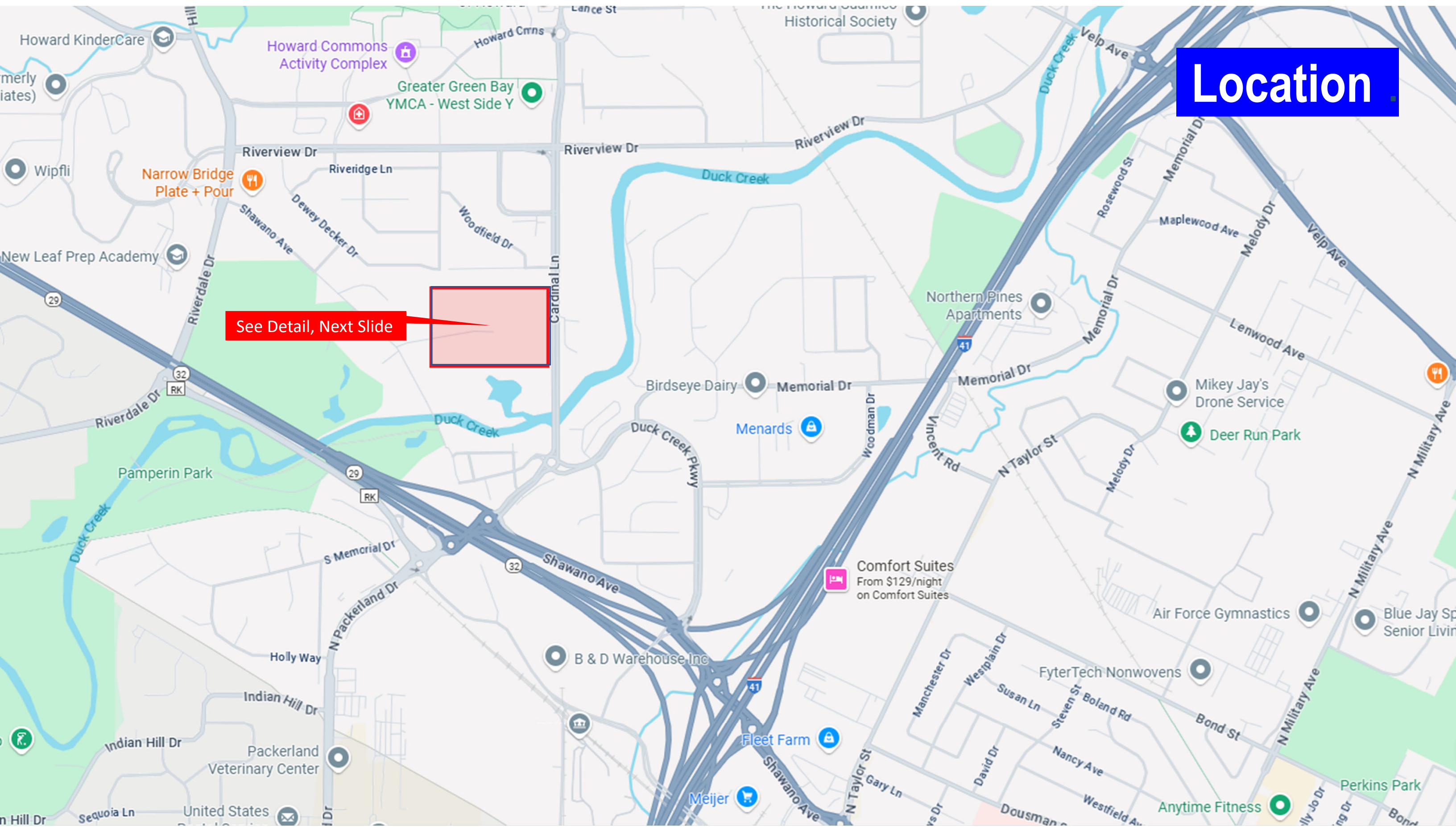


# **New Village of Howard Development!**

- Three commercial lots available along Cardinal Lane for sale or build-to-suit development
- Up to 2 acres available, with 250' of depth off Cardinal Lane
- All utilities provided
- Off-site stormwater retention included in the new regional pond
- Full access to Cardinal Lane from new Hillsdale Court extension, with future shared right-in/right-out Cardinal Lane driveway

# Location



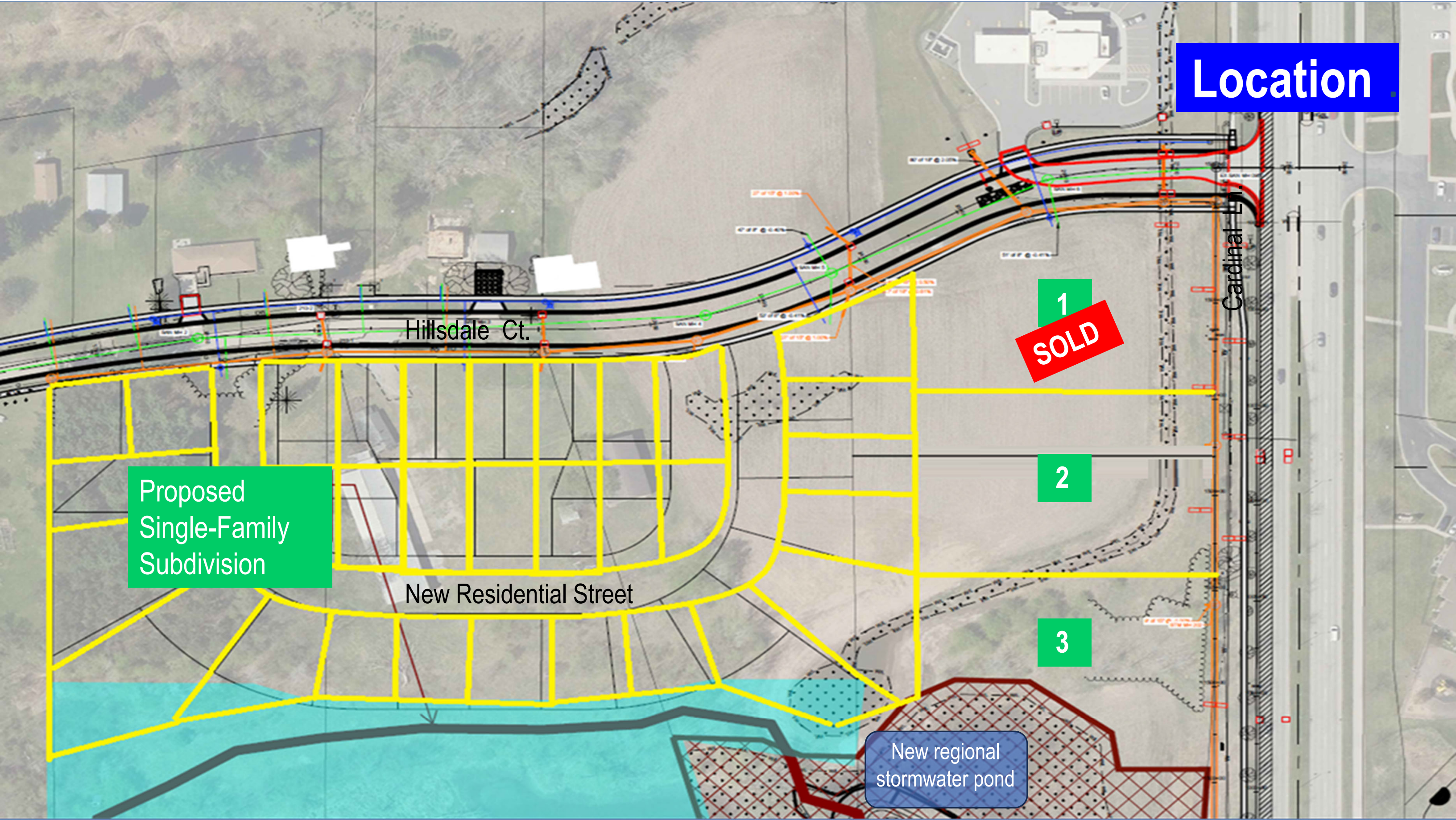


# Location





# Location



Proposed  
Single-Family  
Subdivision

Hillsdale Ct.

New Residential Street

1  
SOLD

2

3

Cardinal Dr.

New regional  
stormwater pond



# **New Village of Howard Development!**

- New Hillsdale Court installed in October 2025
- Residential construction to begin in Spring 2026
- Village of Howard PDD zoning, with wide range of commercial and professional uses allowed
- Contact us for more information, and to discuss pricing and terms:  
(813) 500-0296 or [gb@gb-re.com](mailto:gb@gb-re.com)